



CATCH YOUR
DREAM
HERE

WHAT ARE WE?

Reliant Institute of Technology is an authorized TEKLA training center of Excellence in Kerala. It is formed by a group of passionate engineers and respected consultants from the industry. The institute has formulated a well-structured training program which suits different industries by following international standards that satisfies the technological requirement according to the present demand in the job market. We update our training methodology by taking feedbacks from different companies and industries which makes our vision and mission more effective.



WHY WE EXIST? BRIDGING THE GAP

Let us call everyone students irrespective of whether they are in college, school or working since we are all here to learn. We can view it from two different lenses - we are here to learn, or we are here to equip ourselves with skills needed for brighter career prospects. The process of learning comes full circle with a **job**.

We all know that we want to learn and at the same time equip ourselves with skills that would propel our careers forward, how do we plan to make ourselves accessible to corporations? How do corporations know if we actually learned something from the courses we enrolled for? Did we acquire the skills that they are looking for?

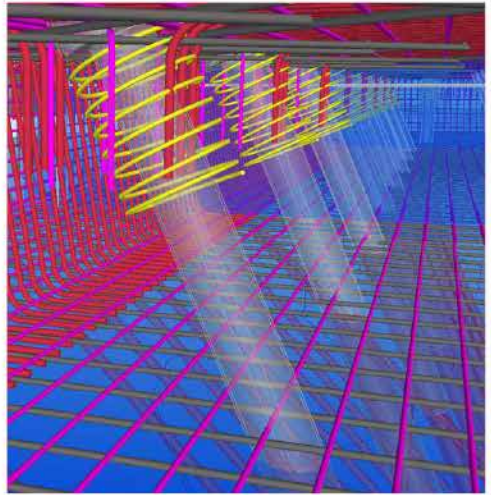
Reliant Institute of Technology makes a bridge between fresh engineers and modern industry Demands. Our expertise and years of experience in this area has helped professionals to find a perfect career. We has studied the technological developments in the industry and has training standards at par with global market. It has become difficult for any fresh engineer passing out from college to start a career without proper training in advanced technologies which is being used in different industries. So we provide standardized training for the students that make them fit for the job, and as per the industrial requirement.

VISION

To embed youth with core knowledge and to mould a center of excellence that shall build tomorrow's leaders who will drive innovation, creativity and entrepreneurship.

MISSION

To become a pinnacle of the industry by bringing the standard of the education which enhance the students to match the employability quality.



ABOUT THE INDUSTRY

Structural Steel Designing and Detailing
An area to be tapped and to be explored
Industry of Structural Engineering

Structural engineering — a specialty within the field of engineering — focuses on the framework of structures, and on designing those structures to withstand the stresses and pressures of their environment and remain safe, stable and secure throughout their use. In other words, structural engineers make sure that buildings don't fall down and bridges don't collapse.

Structural engineering is among the oldest types of engineering, dating back to the first instance of tree branches being lashed together with vines to make a shelter. Throughout recorded history, people have been designing and building increasingly larger and more sophisticated structures, from primitive huts to the International Space Station.



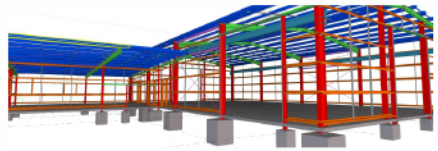
STEEL DESIGNING

Structural steel design, is an area of knowledge of structural engineering used to design steel structures. The structures can range from schools to homes to bridges.

In structural engineering, a structure is a body or combination of pieces of rigid bodies in space to form a fitness system for supporting loads. Structures such as buildings, bridges, aircraft and ships are all examples under steel structure. The effects of loads on structures are determined through structural analysis. Steel structure is steel construction material, a profile, formed with a specific shape or cross section and certain standards of chemical composition and mechanical properties.

STEEL DETAILING

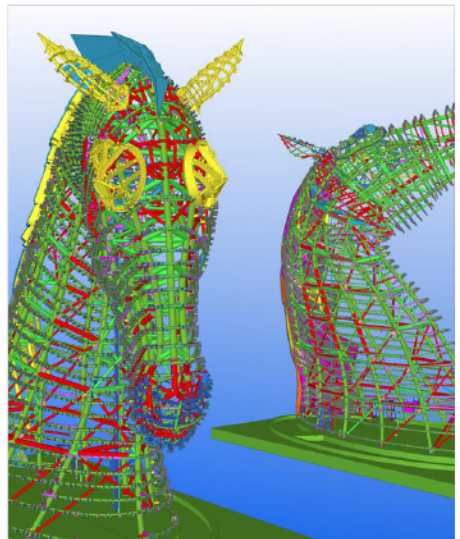
Steel Detailing is the production of shop drawings for a steel fabricator. A steel fabricator is a company who provides, and sometimes - installs, the steel framework for a construction project. A steel detailer's duty is to generate the drawings that the fabricator will use to cut and weld all the necessary members together. A steel detailer also generates the layout instructions to facilitate the installation and erection of the steel framework.



SO, A STEEL DETAILER IS LIKE AN ENGINEER? OR AN ARCHITECT?

A steel detailer uses the architect and engineer's plans to produce the shop drawings for the fabricator.

A very generalized description of this relationship can be described like this...The architect designs the look of the structure, and the engineer calculates the required sizes and locations of the steel to make the structure safe and strong. Finally, the steel detailer uses both sets of plans to provide detailed drawings with exact dimensions and lengths for each individual part that the welder and installer and actually use.

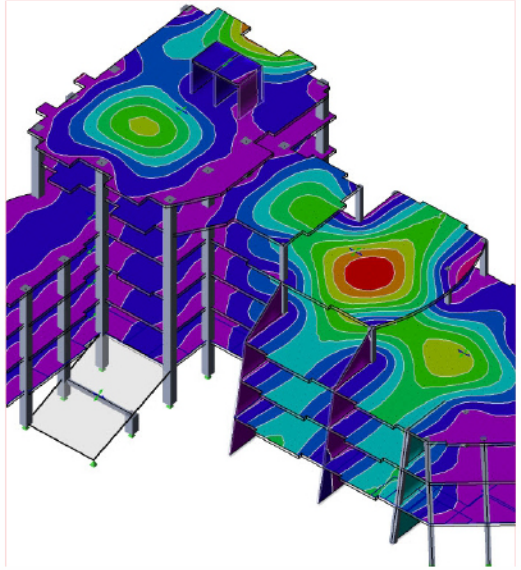


SOFTWARE IN THE INDUSTRY

Tekla Structural Designer Analyze And Design Buildings Efficiently

Tekla Structural Designer is revolutionary software that gives engineers the power to analyze and design buildings efficiently and profitably.

Fully automated and packed with many unique features for optimized concrete and steel design, Tekla Structural Designer helps engineering businesses to win more work and maximize profits. From the quick comparison of alternative design schemes through to cost-effective change management and seamless BIM collaboration, Tekla Structural Designer can transform business.



KEY BENEFITS

- Achieve faster design times
- Establish the best solution quickly
- Manage changes easily
- Maximize profitability and efficiency

A REVOLUTIONARY APPROACH

Unlike traditional analysis software, with Tekla Structural Designer you can create physical, information-rich models that contain all the intelligence needed to fully automate the design and manage project changes. Achieve faster design times and maximize profitability.

ONE PRODUCT, ONE INTERFACE, ONE MODEL

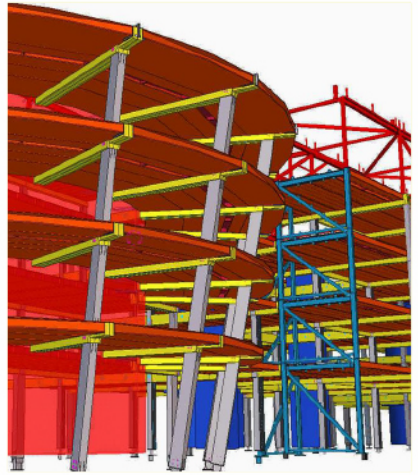
From scheme design all the way through to detailed design, one single model will cover all your structural analysis and design requirements, encompassing both gravity and lateral systems. With Tekla Structural Designer there are no additional modules to buy and you will not waste time switching between multiple software packages to achieve your final design solution.

SEAMLESS BIM INTEGRATION

Because you are creating a single model with a single data set, BIM integration is smooth and effective. Collaborate seamlessly, instantly assess the impact of changes and deliver a more optimized solution to your client.

TEKLA STRUCTURES

With Tekla software, structural engineers can work more effectively - in the way they want, focusing on engineering instead of documentation. You can achieve higher accuracy, consistency and quality in the core work and deliver a valuable model for contractor. Tekla Structures integrates with industry leading analysis and design software, and makes possible coordination with architects, consultants and contractors. Tekla BIMsight offers a professional, free tool for construction collaboration.



WITH TEKLA YOU CAN

- Model even the most complicated projects
- Integrate modeling with structural analysis and documentation.
- Share freely constructable design information with project parties.
- Benefit from new business opportunities to extend service and enjoy a competitive edge.
- Include all materials to your models.

• AUTOMATIC DATA TO CNC

Direct integration with computer numeric controlled (CNC) machines that support the DSTV format, as well as tube profiling machines from manufacturers like HGG, Vernon Tool, and others.

• AUTOMATIC DRAWINGS & REPORTS

All required engineering, fabrication, and erection (piece mark) drawings and reports can be automatically generated from the accurately detailed 3D model. Drawings are associated to the model, so any changes made to the model automatically reflect in the output. Transfer data via reports directly from the model to estimating, scheduling, procurement, and production management.

• AUTOMATIC NUMBERING

Customizable piece marking of parts and assemblies allowing for unique, identical, or hybrid numbering systems which enable efficient traceability throughout fabrication and construction.

• ADVANCED OFFSHORE MODELING

Model and detail structural shapes, profiles, and materials, including tubular and elliptical sections, as well as individual welds and bolts. Plate girders, complex ring plates, node connections, and long seam rotations, can easily be modeled to represent the as-built condition of the structure. Create welded beam to beam connections according to offshore requirements including complex weld preparations, rat holes & scallops.

OPPORTUNITIES

Many of us don't know that India is detailing hub. Yes it is, As like India is a software hub it is also a detailing hub. Companies bid detailing works or contract works and finishes it and send it back for fabrication.

Steel detailing is a non-saturated professional area, where there are lots of opportunities globally. Companies are looking for young passionate detailers for building the incredibles of the world.

In India material used for construction was concrete and rebar. Since the last decade we were able witness the change of the construction industry by adopting steel as backbone. And it is consistently increasing day by day. This shows up the opportunity for the young and passionate engineers to build an awesome career and which is strong as steel.



CAREER GRAPH



JR STEEL DETAILER

SR STEEL DETAILER

JR MODELER

SR MODELER

TEAM LEAD

PROJECT MANAGER

WHAT WE DELIVER?

CERTIFICATION COURSES

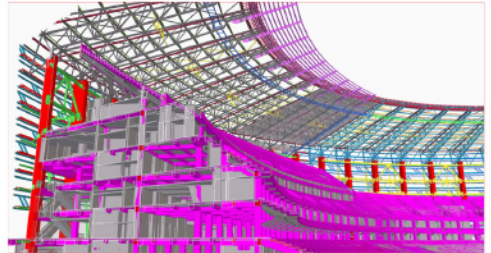
▶ STRUCTURAL STEEL DETAILING COURSE IN TEKLA

▶ Duration: One Month

"TEKLA Steel Detailing Training" is suitable for people who need Fast training in TEKLA BIM environment and Structures with a brief explanation about industry. TEKLA Structures is effective and flexible software for structural steel detailers and fabricators.

COVERED TOPIC:

- TEKLA BIM (Building Information Modelling).
- Modeling and drawing functionality.
- Applying different type of connections.
- Material Take Off reports.
- Setting Project information.
- Drawing properties.
- Theory about industry.



TEKLA and Reliant certificate will be issued after examination

Qualification : Diploma/B Tech/M Tech in Mechanical/Civil

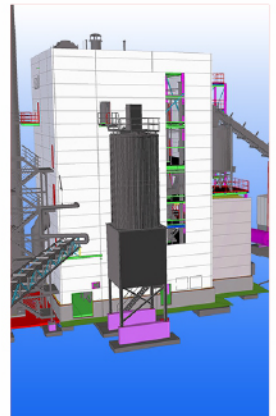
▶ TEKLA STRUCTURAL DESIGN COURSE (TSD)

▶ Duration: 15 Days

Introduction: -TEKLA Structural Designer is revolutionary software that gives engineers the power to analyze and design buildings efficiently and profitably. Fully automated and packed with many unique features for optimized concrete and steel design, TEKLA Structural Designer helps engineering businesses to win more work and maximize profits.

COVERED TOPIC:

- Introduction to TEKLA Design
- Specific Features of TEKLA Design Software
- Generating the model Geometry
- Specifying Material Constants, Element Properties ,Support Conditions
- Specifying Primary load cases
- Specifying Wind load and Temperature load
- Creating load combinations
- Seismology
- Seismic Analysis and Design
- Dynamic Analysis
- Concrete Design
- Steel Design
- Report Generation and plotting



Qualification : Diploma/B Tech/M Tech

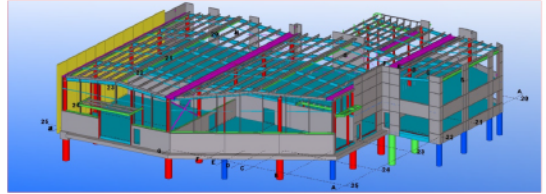
▶ CONCRETE DETAILING COURSE IN TEKLA

▶ Duration: 10 Days

TEKLA's software solution for the precast concrete industry is the most efficient way to produce and deliver all types of precast concrete elements at the right time to the right place. By enabling error-free detailing and easy change management, and by integrating design and detailing with manufacturing and project management, the TEKLA 3D building information model can be used to support the entire precast workflow from sales and bidding to erection and beyond.

COVERED TOPIC:

- Basic Concrete Modeling Tools
- Adding Roof, foundation, beam, column etc.
- Adding Reinforcement to the Model
- Create cast unit drawings
- Create general arrangement drawings



TEKLA and Reliant certificate will be issued after examination
Qualification Civil Diploma, B Tech and M Tech

DIPLOMA COURSES

▶ STRUCTURAL STEEL DETAILING COURSE IN TEKLA

▶ Duration: 3 Months

Diploma in "TEKLA Steel Detailing" is suitable for people who need to become a steel detailing professional. After this course, students will be eligible for the post of TEKLA Jr Steel detailer/checker Post.

COVERED TOPIC: MODULE #01

- ▶ Introduction of Structural Steel Industry
- ▶ Structural steel detailing concepts
- ▶ Elements of steel construction
- ▶ Working procedure in steel detailing industry
- ▶ Types of structures and structural components
- ▶ Steel detailing tools
- ▶ Structural behavior of steel and section properties
- ▶ Basic Design aspects

MODULE #02

- ▶ Bolt and bolting terminology
- ▶ Weld: general concepts, types and symbols
- ▶ Various connection types
- ▶ Moment, shear and splice connections
- ▶ Trusses and its types
- ▶ Staircase and rails
- ▶ Miscellaneous items
- ▶ CNC
- ▶ OSHA details
- ▶ Paint specification details, galvanization

MODULE #03

- ▶ Introduction about bidding
- ▶ Detailing of different structural elements
- ▶ Properties of structural section
- ▶ Different grades of steel
- ▶ Contract drawing study for job execution
- ▶ Methods of ABM Preparation
- ▶ Beams and columns
- ▶ Types of beams, various support conditions
- ▶ Types of bracings

MODULE #04

- ▶ Drawing editing standards and procedure
- ▶ Drawing and its types
- ▶ Views of steel members
- ▶ Detailing of anchor bolt plan and erection drawings
- ▶ Detailing of fabrication drawing, its standards and concepts
- ▶ Detailing of miscellaneous structures
- ▶ Section and its types
- ▶ Single part drawing editing

MODULE #05

- ▶ Drawing checking procedure and detailing check list preparation
- ▶ Checking anchor bolt plan and erection drawings
- ▶ Checking of fabrication drawing, its standards and concepts
- ▶ Checking of miscellaneous structures
- ▶ Single part drawing checking

MODULE #07

- ▶ System connections and macros
- ▶ Connection applications
- ▶ Introduction of component catalogue
- ▶ Input base plate component
- ▶ Input beam to column connections
- ▶ Bracing connections
- ▶ Miscellaneous items

MODULE #09

- ▶ Model checking procedures
- ▶ Drawing checking procedures
- ▶ Report creation in TEKLA
- ▶ Job submission procedures
- ▶ Revision works and procedures
- ▶ Submission of change orders
- ▶ Other trade coordination

MODULE #06

- ▶ About TEKLA and introduction to TEKLA structure software
- ▶ Creating new model in TEKLA
- ▶ Open model/save as/opening single-multi user model
- ▶ Entering project properties
- ▶ Creation of various views
- ▶ Create plan and elevation
- ▶ Placing of grids and work area
- ▶ Placing of steel member in model
- ▶ Other modeling properties and tools

MODULE #08

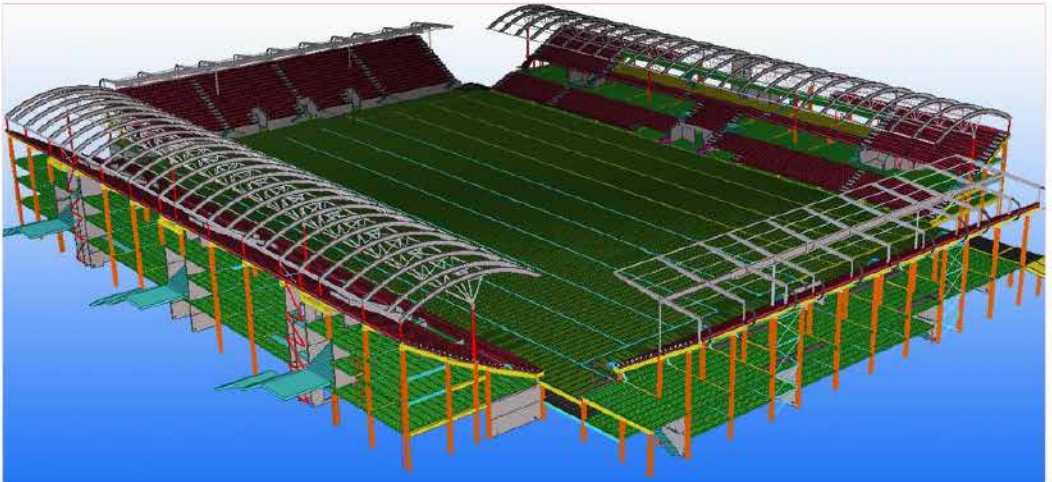
- ▶ Numbering series and phasing /Lotting/Sequencing
- ▶ Drawing creations in TEKLA model and sample drawing detailing
- ▶ Editing tools
- ▶ Creation and editing of anchor bolt plan and erection drawings
- ▶ Editing practical classe

MODULE #10

- ▶ Sample job with all procedures
- ▶ Interview questions and discussions
- ▶ Test paper and assignments.

TEKLA and Reliant certificate will be issued after examination

Qualification Civil Diploma, B Tech and M Tech



PG DIPLOMA COURSE

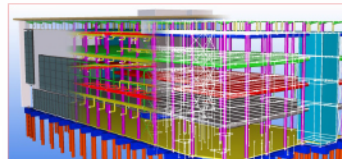
▶ STRUCTURAL ENGINEERING COURSE IN TEKLA

▶ Duration: 4 Months

This course is the combination of TEKLA Structural Steel detailing, TEKLA Structural design, TEKLA Concrete Detailing and Vico Software as management software. In this course you can achieve detailing knowledge in steel detailing and concrete with whole industry knowledge with TEKLA Structural Design

COVERED TOPIC:

- Theory and TEKLA training for Steel detailing industry
- Theory and TEKLA training for Concrete detailing industry
- TEKLA training for Structural Design



TEKLA and Reliant certificate will be issued after examination
Qualification Civil Diploma, B Tech and M Tech

FAST TRACK COURSES

▶ STRUCTURAL STEEL DETAILING COURSE IN TEKLA

This course is mainly for working professionals.

▶ Duration: 1 Week

COVERED TOPIC:

- All TEKLA Tools for Steel Detailing
- Sample Project by TEKLA hands on sections

TEKLA and Reliant certificate will be issued
after examination
Qualification Civil Diploma, B Tech and M Tech

▶ STRUCTURAL DESIGN COURSE IN TEKLA

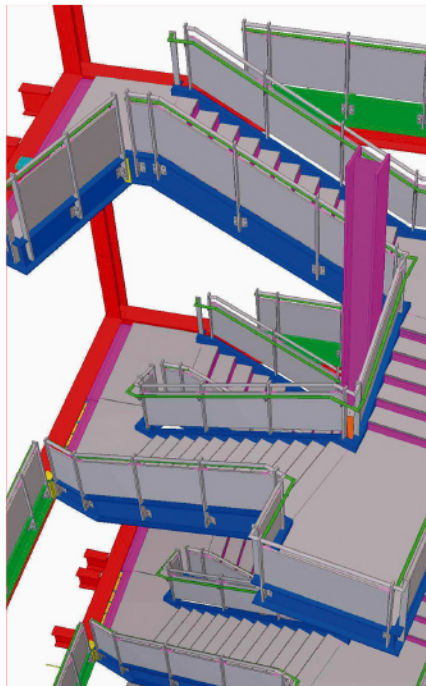
This course is mainly for working professionals.

▶ Duration: 2 Days

COVERED TOPIC:

- Introduction to TEKLA Design tools
- Method of design by using TSD
- Sample project by hands on sections

Qualification Civil Diploma, B Tech and M Tech



TEKLA 2016

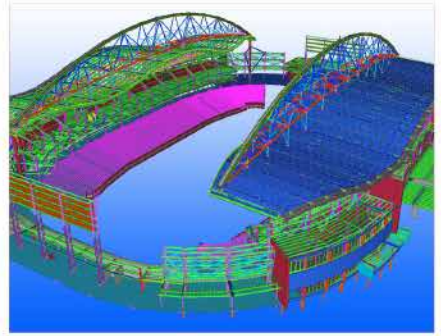
This course is mainly for working professionals to get latest TEKLA Version study.

Duration: 2 Days

COVERED TOPIC:

- All tools study with respect to TEKLA 2016
- Sample project by hands on sections

Qualification Civil Diploma, B Tech and M Tech



OTHER COURSES

MECHANICAL CAD



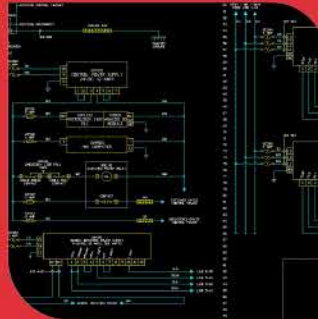
CIVIL CAD



ARCHITECTURE CAD



ELECTRICAL CAD



PROJECT PLANNING



SOFTWARE EXPERTISED



TO ACCOMPLISH

GREAT THINGS

WE MUST NOT ONLY ACT
BUT ALSO

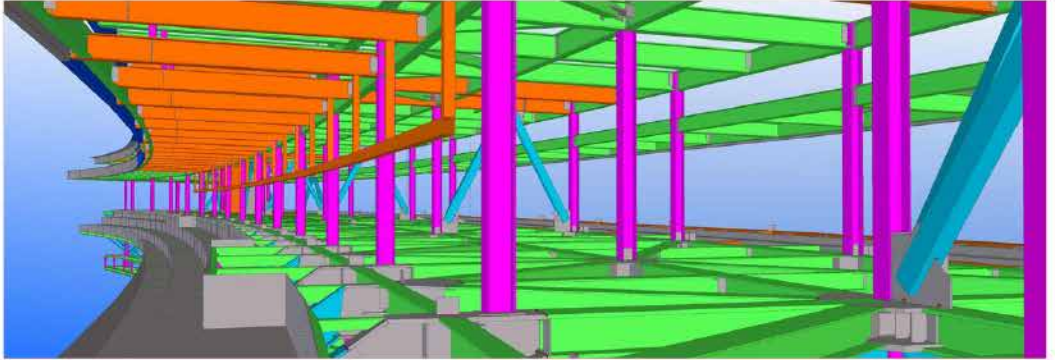
DREAM;

NOT ONLY PLAN BUT ALSO

BELIEVE

EXTRA TO ACADEMICS

Contract Projects | Sub Contract Projects | Project support for students | Free Workshops



OUR FACILITIES



PLACEMENT CELL

Best Placement for students has always remained a priority for us. Our dedicated Career Development & Placement team work towards finding the best job by working closely with them to define the career path. We tie up with various top Companies to place our students in India and abroad. We highly value our Partnership with Industry Leaders, alumni and staff to make our recruiting experience Productive and Positive.

▶ PLACED STUDENTS



AKHIL SEBASTIAN
ADVANCER, ERNAKULAM



ARJUN S
G2G, BANGALORE



BIMAL NATH K V
G2G, BANGALORE



VISAKH.V
ARIES MARINE, KOCHI



JIJIN MATHEW
G2G, BANGALORE



JITHIN A J
CAD STEEL, ALAPPUZHA



MUHSIN M NAJEEB
G2G, BANGALORE



NIKHIL BABU
G2G, BANGALORE



RAHUL R NAIR
CAD STEEL, ALAPPUZHA



SAKEER HUSSAIN
ADVANCER, ERNAKULAM



SHAZ ASEEM
ADVANCER, ERNAKULAM



AVINASH JAMES
ARIES MARINE, KOCHI

PLACEMENT PARTNERS





Project / Training Division

SECOND FLOOR, NEW WAY BUILDING, RAILWAY LINK ROAD, CALICUT-673002

RELIANT TOWER, DOOR NO. 36/1287/A, VAIDYAR LANE, NEAR JUDGES AVENUE, KALOOR, KOCHI - 682017

 **+91 9645 753 885**

CALICUT

KOCHI

KOLLAM

TRIVANDRUM

CHENNAI

info@relianttechnologyinstitute.com | www.relianttechnologyinstitute.com